

This article was downloaded by:

On: 25 January 2011

Access details: *Access Details: Free Access*

Publisher *Taylor & Francis*

Informa Ltd Registered in England and Wales Registered Number: 1072954 Registered office: Mortimer House, 37-41 Mortimer Street, London W1T 3JH, UK



## Liquid Crystals

Publication details, including instructions for authors and subscription information:

<http://www.informaworld.com/smpp/title~content=t713926090>

### Homogeneous liquid crystal orientation on ion beam exposure TiO<sub>2</sub> surfaces depending on an anisotropic dipole field

Jin-Woo Lee<sup>a</sup>; Byung-Moo Moon<sup>a</sup>; Kang-Min Lee<sup>b</sup>; Young-Hwan Kim<sup>b</sup>; Hong-Gyu Park<sup>b</sup>; Ji-Hun Lim<sup>b</sup>; Byeong-Yun Oh<sup>b</sup>; Byoung-Yong Kim<sup>b</sup>; Jeong-Yeon Hwang<sup>b</sup>; Chul-Ho Ok<sup>b</sup>; Dae-Shik Seo<sup>b</sup>; Jeong-Min Han<sup>c</sup>

<sup>a</sup> Department of Electrical Engineering, Korea University, Sungbuk-gu, Seoul, Republic of Korea <sup>b</sup> Information Display Device Laboratory, School of Electrical and Electronic Engineering, Yonsei University, Seodamun-ku, Seoul, Korea <sup>c</sup> Department of Electronics, Seoul University, Jungnang-gu, Seoul, Republic of Korea

Online publication date: 04 March 2010

**To cite this Article** Lee, Jin-Woo , Moon, Byung-Moo , Lee, Kang-Min , Kim, Young-Hwan , Park, Hong-Gyu , Lim, Ji-Hun , Oh, Byeong-Yun , Kim, Byoung-Yong , Hwang, Jeong-Yeon , Ok, Chul-Ho , Seo, Dae-Shik and Han, Jeong-Min(2010) 'Homogeneous liquid crystal orientation on ion beam exposure TiO<sub>2</sub> surfaces depending on an anisotropic dipole field', *Liquid Crystals*, 37: 3, 279 – 284

**To link to this Article:** DOI: 10.1080/02678290903564411

URL: <http://dx.doi.org/10.1080/02678290903564411>

## PLEASE SCROLL DOWN FOR ARTICLE

Full terms and conditions of use: <http://www.informaworld.com/terms-and-conditions-of-access.pdf>

This article may be used for research, teaching and private study purposes. Any substantial or systematic reproduction, re-distribution, re-selling, loan or sub-licensing, systematic supply or distribution in any form to anyone is expressly forbidden.

The publisher does not give any warranty express or implied or make any representation that the contents will be complete or accurate or up to date. The accuracy of any instructions, formulae and drug doses should be independently verified with primary sources. The publisher shall not be liable for any loss, actions, claims, proceedings, demand or costs or damages whatsoever or howsoever caused arising directly or indirectly in connection with or arising out of the use of this material.

## Homogeneous liquid crystal orientation on ion beam exposure TiO<sub>2</sub> surfaces depending on an anisotropic dipole field

Jin-Woo Lee<sup>a</sup>, Byung-Moo Moon<sup>a\*</sup>, Kang-Min Lee<sup>b</sup>, Young-Hwan Kim<sup>b</sup>, Hong-Gyu Park<sup>b</sup>, Ji-Hun Lim<sup>b</sup>, Byeong-Yun Oh<sup>b</sup>, Byoung-Yong Kim<sup>b</sup>, Jeong-Yeon Hwang<sup>b</sup>, Chul-Ho Ok<sup>b</sup>, Dae-Shik Seo<sup>b\*</sup> and Jeong-Min Han<sup>c</sup>

<sup>a</sup>Department of Electrical Engineering, Korea University, 5-1, Anam-dong, Sungbuk-gu, Seoul 136-701, Republic of Korea;

<sup>b</sup>Information Display Device Laboratory, School of Electrical and Electronic Engineering, Yonsei University, 262 Seongsanno, Seodamun-ku, Seoul 120-749, Korea; <sup>c</sup>Department of Electronics, Seoul University, Seoildaehak-gil 22, Jungnang-gu, Seoul 131-702, Republic of Korea

(Received 7 October 2009; final version received 16 December 2009)

We studied homogeneous liquid crystal (LC) alignment properties on ion-beam (IB) irradiated TiO<sub>2</sub> films deposited by the electron beam evaporation method. Stable homogeneous LC alignment on a TiO<sub>2</sub> surface resulted from IB irradiation energy over 1800 eV. X-ray photoelectron spectroscopy analyses showed that Ti<sup>4+</sup> 2p<sub>3/2</sub> and Ti<sup>4+</sup> 2p<sub>1/2</sub> peaks were increased with increasing IB energy. Assuming that the increased peaks produced anisotropy dipole fields in the direction of the IB exposure process, we confirmed that the increasing IB energy induced strengthened the surface energy for entirely clear and stable LC molecule orientation. The voltage-transmittance characteristics of the twisted-nematic cell on the TiO<sub>2</sub> surface indicate that the TiO<sub>2</sub> film has potential for use as the LC alignment layer.

**Keywords:** TiO<sub>2</sub>; ion-beam; liquid crystal alignment; anisotropy dipole field

### 1. Introduction

Interactions between liquid crystal (LC) molecules and solid-substrate surfaces have significant meaning in both fundamental research and liquid-crystal display (LCD) applications [1, 2]. LC alignments on indium-tin oxide (ITO)-coated glass substrates can be achieved on different material surfaces using various methods, such as the rubbing process [3], oblique SiO film deposition [4], ultraviolet (UV) exposure [5] and ion-beam (IB) bombardment [6, 7]. In particular, the IB irradiation method on inorganic or organic LC alignment layers has been investigated intensively, as it provides controllability in a non-stop process for producing high-resolution displays [6–9]. Many optically transparent and insulating films, such as nitrogen-doped diamond-like carbon (NDLC) [10], SiC [8] and SiO<sub>x</sub> [9], have been investigated as potential candidates for inorganic alignment materials. However, the study of LC orientation on a new inorganic material having superior capacity is required to produce high-performance displays, because inorganic materials with high dielectric constants can reduce LC driving voltage to decrease effective power consumption for LCD operation [11–13].

Among the many other potential high-*k* oxides, TiO<sub>2</sub> shows outstanding chemical stability, a high refractive index, great UV absorptivity and photochemical activity [14–16]. Above all, TiO<sub>2</sub> has a permittivity value of over 80 [17], which can be ideally applied as a high-*k* alignment layer in LCDs.

In this paper, we report homogeneous LC alignment characteristics on IB-irradiated TiO<sub>2</sub> surfaces deposited by the electron beam evaporation method. Increasing IB energy resulted in favourable pretilt angles on fabricated LC cells (60 μm gap) with clear and uniform photomicroscopes. We also observed thermal stability for LC cells using a photomicroscope. To investigate the reason why LCs could be clearly aligned, we used an atomic force microscope (AFM) to measure the contact angle on IB-irradiated TiO<sub>2</sub> surfaces. We also researched X-ray photoelectron spectroscopy (XPS) spectra with different IB exposure energies to examine the phenomenon of anisotropic dipole–dipole interactions on IB-irradiated TiO<sub>2</sub> surfaces. Finally, the voltage–transmittance (*V*–*T*) characteristic of twisted-nematic (TN) cells (5 μm gap) on the TiO<sub>2</sub> surface was explored.

### 2. Experiment

TiO<sub>2</sub> layers of 1000 Å thickness were deposited on ITO-coated glass (Samsung Corning 1737) by electron beam evaporation at the vacuum condition of 10<sup>–6</sup> Torr. The TiO<sub>2</sub> surfaces were irradiated by a DuoPIGatron-type IB system causing a dense and uniform Ar<sup>+</sup> plasma environment. The used IB exposure energies were 0, 600, 1200, 1800 and 2400 eV with a fixed exposure angle of 45° and time of 1 minute. Anti-parallel figure LC cells were prepared to measure

\*Corresponding authors. Email: byungmoo@korea.ac.kr; dsseo@yonsei.ac.kr

pretilt angles, polarised photomicroscope (MX50-CF; Olympus) images and thermal stability. To measure thermal stability, we observed photomicroscope images of the LC cells annealed for 10 minutes from 60°C to 240°C per 30°C. X-ray diffraction (XRD) measurements were performed using 1.5 kW Cu-radiation ( $\lambda = 1.5406 \text{ \AA}$ ) (Rigaku). A crystal rotation method (TBA 107 tilt-bias angle evaluation device; Autoronic) was used to measure pretilt angles and compare the measured transmittance graph to the simulated graph produced by the given LC information. We used an AFM (AutoProbe CP Research sys.) to measure the effect of IB irradiation on TiO<sub>2</sub> surface roughness. XPS (ESCA LAB 220-XL, VG Scientific, USA) analyses were utilised to investigate the chemical mechanism of a TiO<sub>2</sub> surface with IB irradiation used for LC alignment. Finally, contact angles for the surfaces were measured using a Rame-Hart telescopic goniometer and a contact analyser with a Gilmont syringe and a 25 gauge flat-tipped needle (Phoenix 450, Surface Electro Optics, Seoul, Republic of Korea). Distilled water was used as the probe fluid. The  $V$ - $T$  characteristic of the TN cell was obtained with a LCD evaluation system (LCMS-200, Sesim Photonics Technology).

### 3. Results and discussion

Figure 1 shows polarised photomicroscope images of LC alignment states on TiO<sub>2</sub> thin film surfaces

deposited by electron beam evaporation on ITO-coated glass substrates. We confirmed that 600 and 1200 eV of IB irradiation did not induce clear and uniform LC alignment. However, Figures 1(c) and 1(d) showed uniformly aligned LC molecular states on the TiO<sub>2</sub> thin film surface with any partial defect.

As shown in Figure 2, the experimental (red line) and simulated (blue line) (colour refers to the online version) transmittance graphs of LC cells on TiO<sub>2</sub> surfaces with a latitudinal rotation angle from  $-70^\circ$  to  $70^\circ$  were measured and the oscillation of the transmittance was observed through the variation of the birefringence of the LC cell rotation. The pretilt angle of aligned LCs was produced in the direction of the IB irradiation process. As confirmation that the experimental transmittance graph identically approached the graph simulated from the rotation method system, we assumed that relatively high IB exposure energy produced an anisotropic dipole field on the entire TiO<sub>2</sub> surfaces. Eventually, the strengthened uniform dipole field would induce clear and uniform LC alignment properties as shown in Figures 1(c) and (d), although it could ascertain that 1800 eV was a transition point to align homogeneous LCs clearly on TiO<sub>2</sub> surfaces.

To analyse the LC alignment mechanism, we observed a non-IB irradiated cell (0 eV), an IB-irradiated but poorly aligned LC cell (600 eV) and an

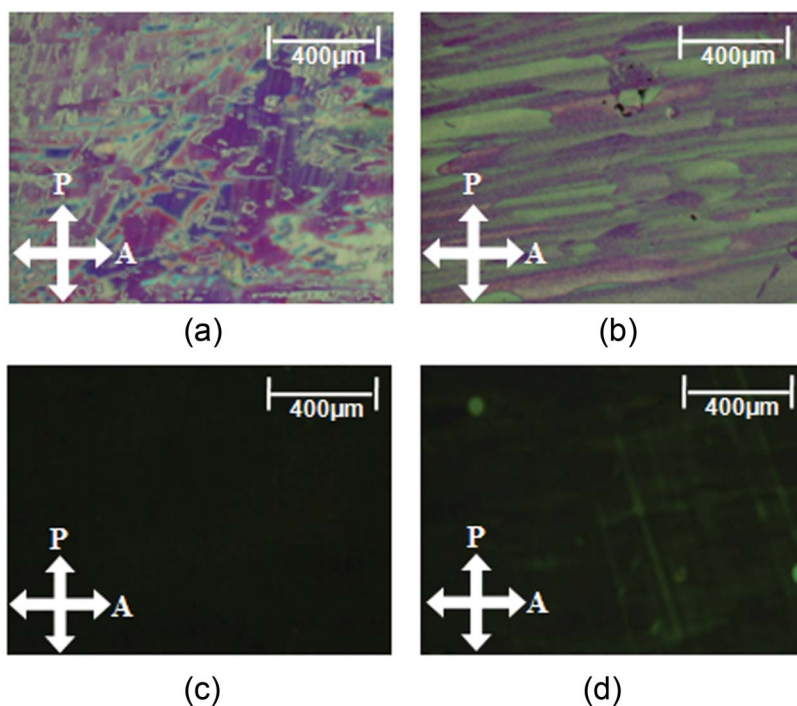


Figure 1. Photomicroscope images of LCs on IB-irradiated TiO<sub>2</sub> film surfaces (in crossed Nichols). (a) 600 eV, (b) 1200 eV, (c) 1800 eV and (d) 2400 eV.

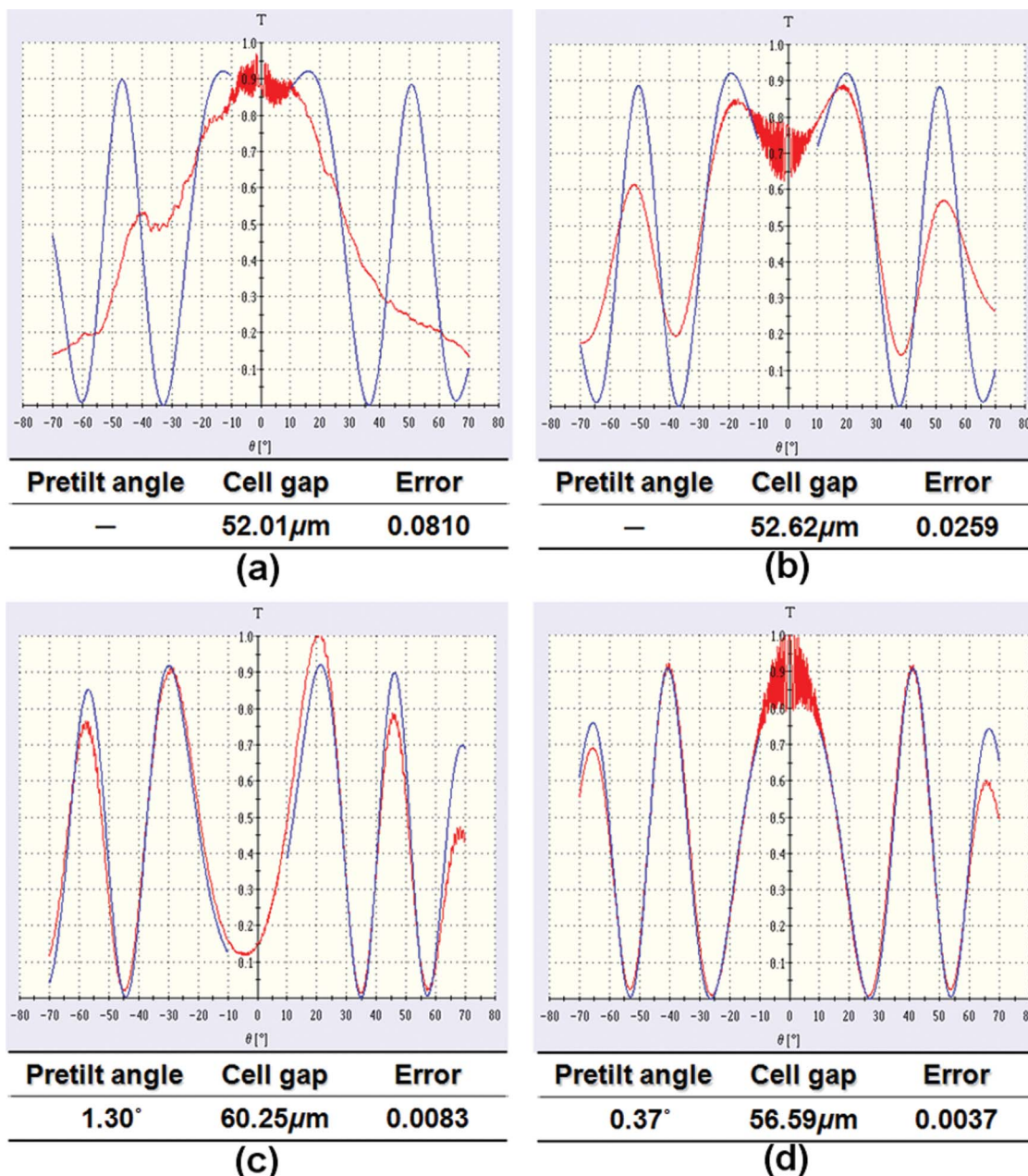


Figure 2. Pretilt angles of LC cells on IB-irradiated  $\text{TiO}_2$  surfaces measured by a crystal rotation method using the transmittance measurement with latitudinal rotation. The red and blue graphs indicate experimental measured and simulated graphs, respectively. Colour refers to the online version.

IB-irradiated well-aligned LC cell (1800 eV) through AFM measurements. Figure 3 shows the measured AFM images of  $\text{TiO}_2$  thin film surfaces with IB exposure energies of 0, 600 and 1800 eV under the other same conditions with IB exposure angle of  $45^\circ$  and time of 1 minute. As shown in these images, there were no topological differences. This indicates that the mechanism of LC alignment on  $\text{TiO}_2$  thin films via IB exposure could not be explained by the physical impacts such as the groove effect. Moreover, the XRD

pattern in Figure 3(d) means that the deposited  $\text{TiO}_2$  structures have an amorphous phase.

Figure 4 shows XPS analyses of IB-irradiated  $\text{TiO}_2$  surfaces using 0, 600 and 1800 eV IB exposure energy. A sub peak of  $\text{Ti}^{4+}$  2p was displayed based on our previous work ( $\text{Ti}^{4+}$   $2p_{3/2} = 458.75$  eV,  $\text{Ti}^{4+}$   $2p_{1/2} = 464.4$  eV) [18]. The film surfaces irradiated by IB exposure process at energies of less than 600 eV had little peak change for  $\text{Ti} 2p_{3/2}$  and  $\text{Ti} 2p_{1/2}$ . That is, the weak intensity of the IB irradiation did not really alter

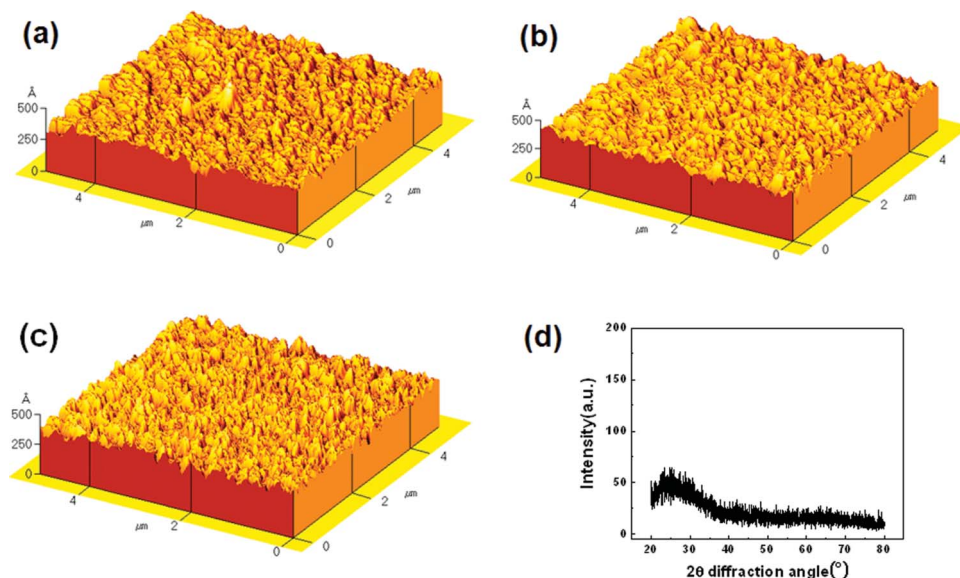


Figure 3. AFM images on  $\text{TiO}_2$  film surfaces with IB energy of (a) 0 eV, (b) 600 eV and (c) 1800 eV. (d) XRD pattern on the deposited  $\text{TiO}_2$  film.

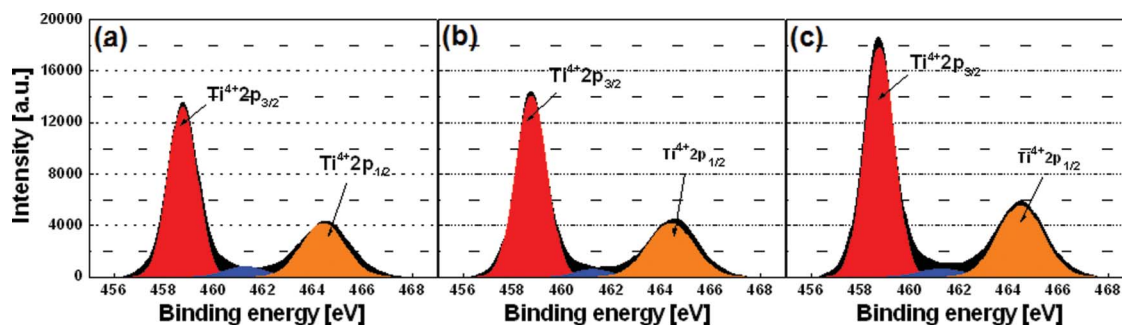


Figure 4. XPS analyses of  $\text{TiO}_2$  films. (a) 0 eV, (b) 600 eV and (c) 1800 eV.

the chemical structure of the  $\text{TiO}_2$  film surface. However, on increasing the IB energy to 1800 eV, the peak intensities of  $\text{Ti } 2p_{3/2}$  and  $\text{Ti } 2p_{1/2}$  were considerably increased. This means that IB irradiation intensities over 1800 eV could change the states of  $\text{TiO}_2$  surface bonds. Consequently, we deduced that the LC alignment on the  $\text{TiO}_2$  surface via IB irradiation depends strongly on the increased  $\text{Ti } 2p_{3/2}$  and  $\text{Ti } 2p_{1/2}$  orbital. Moreover, the increased orbital would produce anisotropic dipole-dipole interactions between LC molecules and IB-irradiated  $\text{TiO}_2$  surfaces.

Figure 5 shows contact angle images of  $\text{TiO}_2$  thin film surfaces. The cells with 0, 600 and 1800 eV IB intensities were measured. If anisotropic dipole-dipole interactions were produced on  $\text{TiO}_2$  surfaces using high IB exposure energy, we assumed that the surface energy on the surfaces could be strengthened by increasing the energy. As shown in Figure 5, the

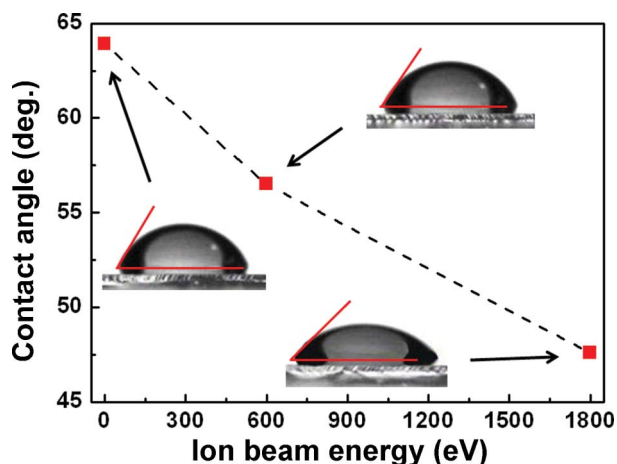


Figure 5. Graph of the measured contact angles on IB-irradiated  $\text{TiO}_2$  surfaces with IB energy of 0, 600 and 1800 eV. The insets show contact angle images on the  $\text{TiO}_2$  film surfaces.

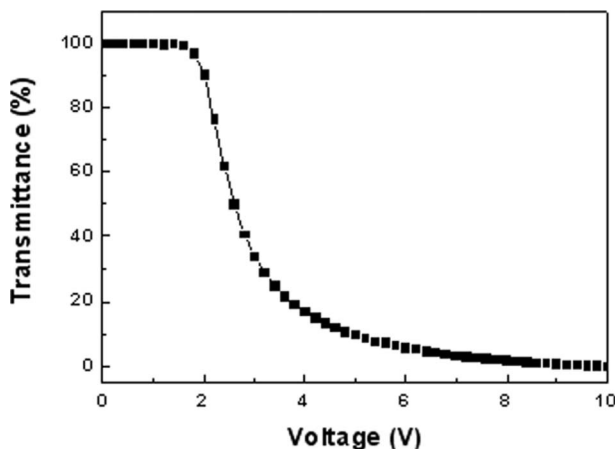


Figure 6.  $V$ - $T$  characteristic for a TN cell on  $\text{TiO}_2$  film with IB irradiation at an incident energy of 1800 eV.

measured contact angle was decreased with increasing IB energy and the smallest value of  $47.6^\circ$  was observed at the IB energy of 1800 eV. In addition, the surface energy of  $35 \text{ mN m}^{-1}$  did not change when the cell was exposed to an IB intensity of 600 eV, but the value increased to  $42 \text{ mN m}^{-1}$  when the cells were exposed to IB energy of 1800 eV. From these results, we concluded that the increment of IB energy traced out the increase of polar surface energy [19]. This means that there is a transition point of IB energy in producing proper surface energy that causes uniform and clear homogeneous LC molecular orientation. Therefore, it was revealed that increased polar surface energy sufficient to induce dipole-dipole interactions between LC molecules and the  $\text{TiO}_2$  surface is essential for LC orientation [20].

Figure 6 shows the transmittance curves via applied voltage to the TN cell on the  $\text{TiO}_2$  film with IB irradiation at an incident energy of 1800 eV. The measured transmittance curves are clear and did not have any different optical bounce, such as the backflow effect.

The threshold voltage of TN cells was 2.0 V, which is comparable to the value of a conventional polyimide (PI)-based TN cell [11]. This means that  $\text{TiO}_2$  film is sufficient to replace the alignment layer.

To estimate LC anchoring energy, we observed the thermal stability for a LC cell. After the LC cell was annealed by specific heat and cooled gradually, the LC alignment effect was observed by photomicroscope. As shown in Figure 7, LC alignment was good when the annealing temperature was from room temperature (RT) up to  $180^\circ\text{C}$ . However, destruction of LC alignment started at  $210^\circ\text{C}$ , and LC alignment was entirely destroyed at  $240^\circ\text{C}$ . From these results, we can see that LC cells fabricated by  $\text{TiO}_2$  film have good thermal stability. This means that the anchoring energy at the interface between the LC cell and the  $\text{TiO}_2$  film was similar to that of a PI-based LC cell [21, 22]. The anchoring energy produced on IB-irradiated  $\text{TiO}_2$  surfaces could be  $1.0\text{--}2.0 \times 10^{-3} \text{ Jm}^{-2}$ .

#### 4. Conclusions

In this study, we investigated the effects of homogeneous LC alignment on IB-irradiated  $\text{TiO}_2$  surfaces using a DuoPIGatron-type IB exposure system. As IB exposure energies were increased, we observed that homogeneous LC molecule orientation achieved clear and uniform alignment properties on the  $\text{TiO}_2$  surfaces. Through XPS analyses, we confirmed that the IB irradiation changed the surface bonds of the  $\text{TiO}_2$  films and increased the Ti  $2p_{3/2}$  and Ti  $2p_{1/2}$  orbital, which would produce an anisotropic dipole field on the  $\text{TiO}_2$  surfaces. In addition, it was also confirmed that the increased surface energy on the IB-irradiated  $\text{TiO}_2$  surfaces resulted in homogeneous LC alignment uniformly. Finally, a good  $V$ - $T$  characteristic of the TN cell was achieved, and  $\text{TiO}_2$  films have potential as LC alignment layers comparable to PI.

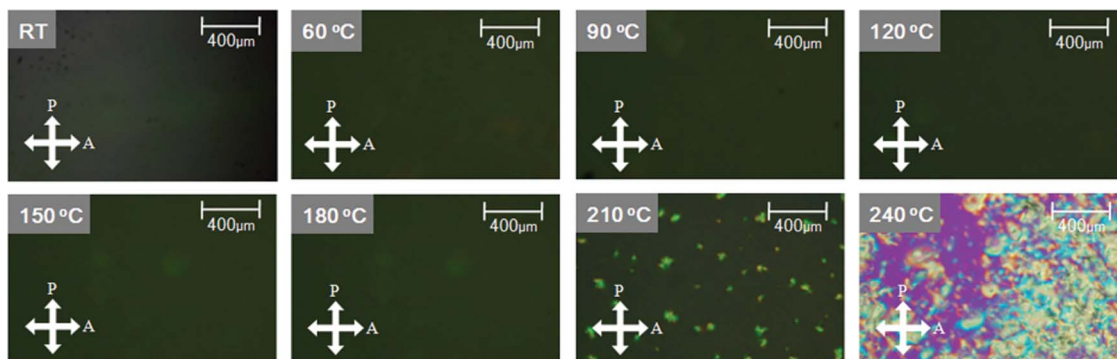


Figure 7. Photomicroscope images of aligned LC on IB-irradiated  $\text{TiO}_2$  surface at various annealing temperature (in crossed Nichols).

## References

- [1] Wang, H.; Wu, T.X.; Zyu, X.; Wu, S.T. *J. Appl. Phys.* **2004**, *95*, 5502–5508.
- [2] Jiao, M.; Ge, Z.; Song, Q.; Wu, S.-T. *Appl. Phys. Lett.* **2008**, *92*, 061102.
- [3] Arafune, R.; Sakamoto, K.; Ushioda, S. *Appl. Phys. Lett.* **1997**, *71*, 2755–2757.
- [4] Lu, M. *Jpn. J. Appl. Phys.* **2004**, *43*, 8156–8160.
- [5] Ho, J.Y.L.; Chigrinov, V.G.; Kwok, H.S. *Appl. Phys. Lett.* **2007**, *90*, 243506.
- [6] Chaudhari, P.; Lacey, J.; Doyle, J.; Galligan, E.; Lien, S.-C.A.; Callegari, A.; Hougham, G.; Lang, N.D.; Andry, P.S.; John, R.; Yang, K.-H.; Lu, M.; Cai, C.; Speidell, J.; Purushothaman, S.; Ritsko, J.; Samant, M.; Stöhr, J.; Nakagawa, Y.; Katoh, Y.; Saitoh, Y.; Sakai, K.; Satoh, H.; Odahara, S.; Nakano, H.; Nakagaki, J.; Shiota, Y. *Nature* **2001**, *411*, 56–59.
- [7] Stöhr, J.; Samant, M.G.; Luning, J.; Callegari, A.C.; Chaudhari, P.; Doyle, J.P.; Lacey, J.A.; Lien, S.A.; Purushothaman, S.; Speidell, J.L. *Science* **2001**, *292*, 2299–2302.
- [8] Moon, H.C.; Kang, H.K.; Hwang, J.Y.; Park, Y.P.; Lim, S.H.; Jang, J.; Seo, D.S. *Jpn. J. Appl. Phys.* **2006**, *45*, 7017–7019.
- [9] Lee, S.K.; Kim, J.H.; Oh, B.Y.; Kang, D.H.; Kim, B.Y.; Han, J.W.; Kim, Y.H.; Han, J.M.; Hwang, J.Y.; Ok, C.H.; Seo, D.S. *Jpn. J. Appl. Phys.* **2007**, *46*, 7711–7713.
- [10] Kim, S.H.; Choi, S.H.; Lee, S.K.; Ok, C.H.; Hwang, J.Y.; Kim, B.Y.; Han, J.M.; Kang, D.H.; Han, J.W.; Ryu, J.H.; Jang, J.; Seo, D.S. *Jpn. J. Appl. Phys. Part 1*, **2007**, *46*, 4225–4227.
- [11] Lim, J.H.; Oh, B.Y.; Lee, W.K.; Lee, K.M.; Na, H.J.; Kim, B.Y.; Seo, D.S.; Han, J.M.; Hwang, J.Y. *Appl. Phys. Lett.* **2009**, *95*, 123503.
- [12] Lee, W.K.; Oh, B.Y.; Lim, J.H.; Park, H.G.; Kim, B.Y.; Na, H.J.; Seo, D.S. *Appl. Phys. Lett.* **2009**, *94*, 223507.
- [13] Park, H.G.; Kim, Y.H.; Oh, B.Y.; Lee, W.K.; Kim, B.Y.; Seo, D.S.; Hwang, J.Y. *Appl. Phys. Lett.* **2008**, *93*, 233507.
- [14] Ollis, D.F.; Pelizzetti, E.; Serpone, N. *Environ. Sci. Technol.* **1991**, *25*, 1523–1529.
- [15] Solomon, D.H.; Hawthorne, D.G. *Chemistry of Paints and Fillers*; Wiley: New York, 1983; Ch. 2.
- [16] Kumar, K.-N.P.; Keizer, K.; Burggraaf, A.J. *J. Mater. Chem.* **1993**, *3*, 1141–1149.
- [17] Wilk, G.D.; Wallace, R.M.; Anthony, J.M. *J. Appl. Phys.* **2001**, *89*, 5243–5275.
- [18] Hofman, S.; Sanz, J.M. *J. Trace Microprobe Techniques* **1982–1983**, *1*, 213–264.
- [19] Żenkiewicz, M. *J. Adhes. Sci. Technol.* **2001**, *15*, 1769–1785.
- [20] Lee, C.Y.; Liu, Y.L.; Wu, K.Y.; Chen, M.Y.; Hwang, J.C. *Jpn. J. Appl. Phys.* **2008**, *47*, 226–230.
- [21] Hwang, J.Y.; Jo, Y.M.; Seo, D.S.; Rho, S.J.; Lee, D.K.; Baik, H.K. *Jpn. J. Appl. Phys.* **2002**, *41*, L654–L656.
- [22] Lee, W.W.; Hwang, J.Y.; Choi, M.K.; Suh, D.H.; Seo, D.S. *Ferroelectrics* **2006**, *344*, 51–61.